

Intellivox-2c



FEATURES:

- Superb Speech Intelligibility
- Slim Unobtrusive Design
- Wide Horizontal Dispersion
- Vertical Beam Steering
- Integral DSP power offering:
 - Control of Vertical Beam
 - opening angle
 - elevation angle
 - focus distance
 - 4 band parametric equaliser
 - Volume Control
 - Delay up to 335 ms
 - AVC (Automatic Volume Control)
- Network Ready
- Integral Surveillance
- Simulation via DDA, Catt-Acoustic and EASE4.0



TOTAL TRANSPARENCY

AXYS®

Intellivox-2c

The AXYS® Intellivox-2c was the world's first fully integrated digitally controlled loudspeaker array and has been serving a wide variety of applications since its introduction in 1996. It has proven to be a versatile and effective solution for vocal reinforcement within reverberant venues, offering excellent speech intelligibility even in demanding acoustic conditions. The Intellivox-2c is capable of providing a constant sound pressure level over a distance of up to 35 m, although a substantial extension of this range can be achieved in less demanding acoustical conditions.

In order to achieve such outstanding performance the Intellivox-2c is equipped with a 32-bit floating point DSP (Digital Signal Processor) which handles the demanding mathematical calculations that are necessary to achieve highly accurate directivity control. In addition to this the DSP offers a wealth of useful audio processing features including: volume control, parametric EQ and delay. The sixteen, custom designed, 4" loudspeakers are driven by an eight channel class-D amplifier, power for which is provided by a sophisticated switched mode power supply, all of which combine to ensure years of reliable operation. The loudspeakers themselves are arranged in accordance with our patented algorithm. An extensive set of surveillance functions have also been implemented to meet the stringent demands of typical VA applications.

The unit can be controlled using our proprietary WinControl software which offers user friendly control of the beam steering parameters, audio processing and surveillance features.

Its compact array length makes the Intellivox-2c suitable for easy and unobtrusive implementation in even the most architecturally sensitive environment.

Typical applications include:

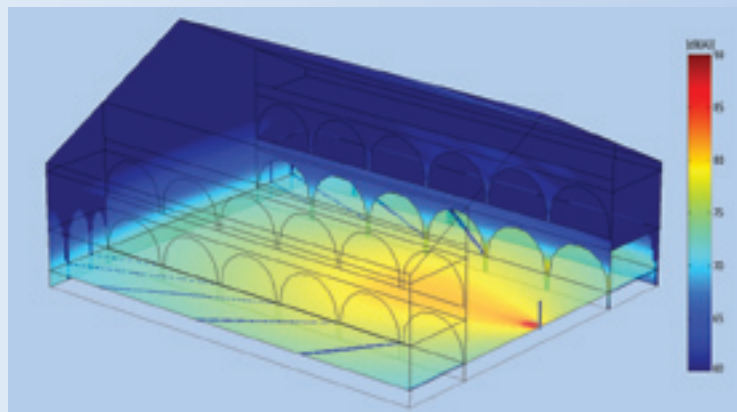
- Transport Hubs
- Parliaments
- Places of Worship
- Lecture Theatres
- Conference Facilities
- Atriums
- Museums

AXYS®
is a registered trademark of

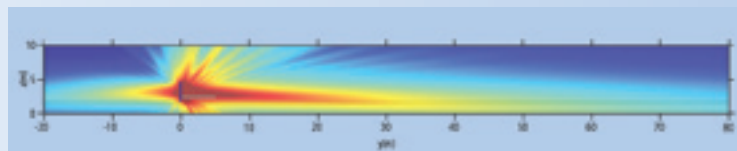
DURAN

AUDIO

Koxkampseweg 10, 5301 KK Zaltbommel,
the Netherlands.
tel. +31 418 515583 fax. +31 418 518077
<http://www.duran-audio.com>
info@duran-audio.com



3D direct SPL plot (A-weighted pink noise) in a 50 x 40 x 23 m room, generated with DDA, showing the suppression above the listening plane.



Vertical cross section of direct SPL plot (A-weighted pink noise) generated with DDA.

SHORT FORM SPECIFICATIONS:

Full specifications can be downloaded from <http://www.duran-audio.com>

Acoustical:

Freq range	: 130 - 10k Hz (+/-3 dB)
Max SPL	
Continuous	: 92 dB SPL A-weighted with pink noise at 30 m
Peak	: 96 dB SPL at 30 m
Coverage	
Horizontal (fixed)	: 150 deg
Vertical (adjustable)	: 6 to 14 deg
Aiming angle	: -16 to 16 deg
Focus distance	: 5 to 100 m
Typical throw	: 35 m
Dynamic range	: 88 dB

Electrical:

Input	
Nominal level	: 0 dBu (line input)
Type	: transformer balanced
Impedance (balanced)	: 6k8 Ω (line input)
Power amps	
Type	: PWM (class D)
Power	: 8 x 40 Wrms (4 Ω)
Mains	
Voltage (+5/-10 %)	: 230 or 115 V
Power consumption	: 58 VA (idle) / 450 VA (full load)

General:

Temperature range (ambient)	: 0 to 40 °C
Transducers	: 16 x 4" full range
Dimensions (H x W x D)	: 2800 x 134 x 92 mm
Default colour	: RAL 9010 (white)
Weight	: 33 kg

Options available include:

- Dual Lobe Software
- Digital Inputs (AES-EBU)
- Dual Line Level Audio Inputs with priority switching
- Full range of mounting accessories
- Pilot Tone Detection
- Extended Delay
- Ambient Noise and Temperature Sensor
- Colour matching service

